

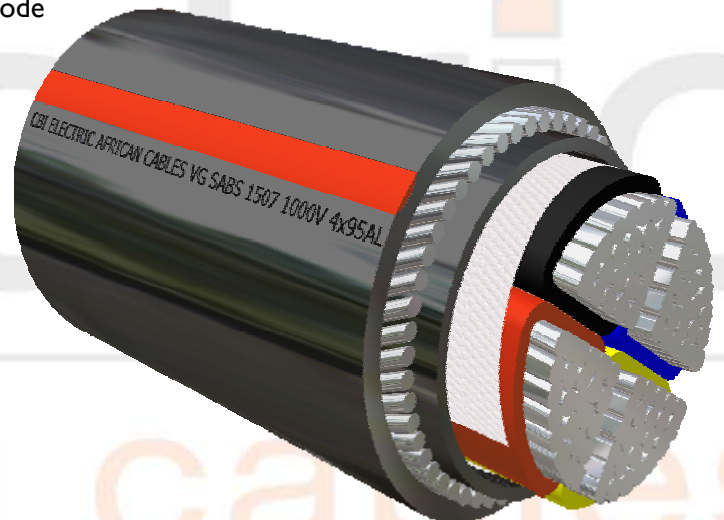
PVC F4CA... Primary group code Aluminium 4 Core
 FR PVC SWA FR PVC (red stripe) ...111 Finish code 600/1000 V
 LH PVC SWA LH PVC (blue stripe) ...212 SANS 1507

Size code	...naaa...	4025	4035	4050	4070	4095	4120	4150	4185	4240	4300
Conductor size	mm ² nom	25	35	50	70	95	120	150	185	240	300
Conductor diameter	mm app.	6.0	7.0	8.0	9.5	11.0	12.5	14.0	15.5	18.0	20.0
Insulation diameter	mm app.	8.0	9.5	11.0	12.5	14.5	16.0	17.5	19.5	22.5	25.0
Bedding diameter	mm app.	21.5	24.0	27.0	31.5	36.0	40.0	44.0	49.0	55.0	61.0
Armour diameter	mm app.	25.0	27.0	30.5	35.5	40.0	45.0	49.0	54.0	60.0	66.0
Cable diameter	mm app.	28.5	31.0	34.5	40.0	45.0	50.0	54.0	59.5	66.5	72.5
Cable mass	kg/m app.	1.5	1.8	2.2	3.0	3.6	4.7	5.4	6.3	7.6	8.9
Gross mass (300 m)	kg app.	535	635	780	1055	1235	1500	1930	2210	2820	3325
Bending radius	mm min.	285	310	345	400	450	500	540	595	665	725
Current rating											
In ground	Amps	87	105	125	155	185	210	240	270	315	355
In ducts	Amps	73	87	105	130	155	180	200	230	270	305
In air	Amps	80	98	120	150	190	220	250	290	345	395
Resistance											
dc @ 20°C	Ω/km max	1.200	0.868	0.641	0.443	0.320	0.253	0.206	1.640	0.125	0.100
ac @ 70°C	Ω/km max	1.442	1.043	0.771	0.533	0.385	0.305	0.249	0.199	0.152	0.123
Reactance											
Impedance	Ω/km	0.080	0.077	0.077	0.072	0.071	0.069	0.070	0.069	0.069	0.069
Short circuit ratings											
Symmetrical	kA (1sec)	2.0	2.8	3.8	5.6	7.7	9.7	12.0	15.0	19.7	24.6
Earth fault	kA (1sec)	3.6*	3.9*	4.5*	6.5*	7.5*	10.4*	11.5*	12.5*	14.2	15.7
(Three Phase) Volt Drop	mV/A/m	2.50	1.81	1.34	0.93	0.68	0.54	0.45	0.37	0.29	0.24

Last updated May 2006

When ordering please quote: primary + size + finish code
 e.g. F4CA 4025 111

* Earth fault rating limited by symmetrical fault rating



POWER BY INNOVATION... INNOVATION THROUGH PARTNERSHIPS

A member of the REUNERT Group

CBi Electric African Cables
 PO Box 172, Vereeniging 1930 • Tel: +27 16 430 6000 • Fax: +27 16 423 6103
 www.cbi-electric.com • afcab@cbi-electric.com

