

LV ABC
XLPE
SELF SUPPORT +
1 x 25mm² auxiliary

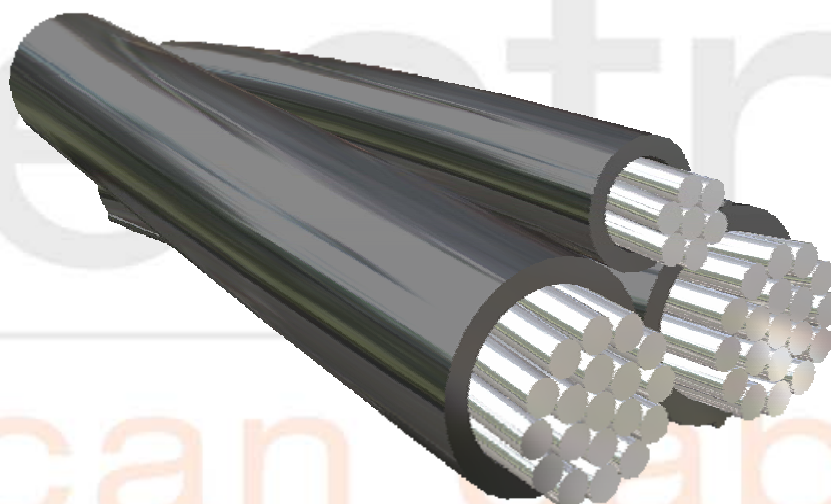
F7CA... Primary group code
...SAI Finish code

Aluminium 2 core
600/1000V
ABC
SANS 1418

Size code	...naaa...	2025	2035	2050	2070	2095	2120	2150
Conductor size	mm ² nom	25	35	50	70	95	120	150
Conductor diameter	mm app.	6.2	7.0	8.2	9.8	11.6	13.5	14.4
Core diameter	mm app.	9.2	10.3	11.5	13.6	15.4	17.3	18.2
Assembled diameter	mm app.	18.5	20.7	23.1	27.2	30.8	34.6	36.4
Cable mass	kg/m app.	0.20	0.26	0.34	0.48	0.64	0.79	0.94
Gross mass (500 m)	kg app.	194	228	288	359	472	557	788
Design Load (UTS/2.5)	kN max	1.32	3.60	4.96	7.12	9.84	12.48	15.36
Current rating								
In air	Amps	111	138	168	213	258	300	339
Resistance								
dc @ 20°C	Ω/km max	1.200	0.868	0.641	0.443	0.320	0.253	0.206
ac @ 90°C	Ω/km max	1.490	1.113	0.822	0.568	0.411	0.325	0.265
Reactance								
	Ω/km	0.090	0.090	0.084	0.083	0.080	0.078	0.077
Impedance								
	Ω/km	1.493	1.117	0.826	0.574	0.419	0.334	0.276
Short Circuit rating								
(Single Phase) Volt Drop	kA (1sec)	2.3	3.0	4.1	5.9	8.2	10.3	12.7
	mV/A/m	2.99	2.23	1.65	1.15	0.84	0.67	0.55

Last updated May 2006

When ordering please quote: primary + size + finish code
e.g. F7CA 2025 SAI



POWER BY INNOVATION... INNOVATION THROUGH PARTNERSHIPS

A member of the REUNERT Group

CBi Electric African Cables
PO Box 172, Vereeniging 1930 • Tel: +27 16 430 6000 • Fax: +27 16 423 6103
www.cbi-electric.com • afcab@cbi-electric.com

